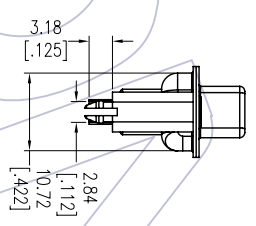
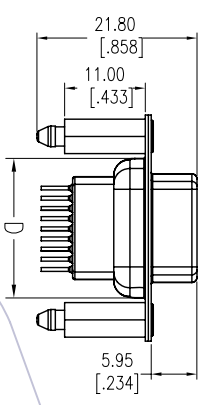
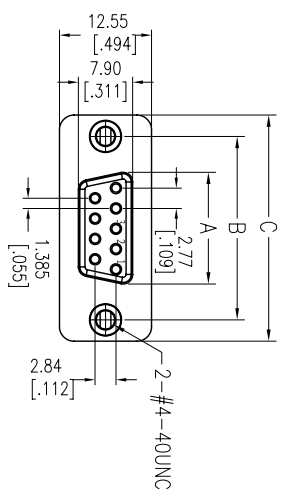




Recommended P.C.B Layout(Top Side)
(PCB BOARD TOLERANCE±0.05)

NOTES:
 Current Rating: 3.0AMP
 Contact Resistance: 20mΩ Max
 Withstand Voltage: 500V AC/DC
 Insulation Resistance: 1000MΩ Min
 Operation Temperature: -55°C to +105°C

Contact Material: Brass
 Contact plating: Au Or Sn over Ni
 Insulator Material: PBT+30%G.F U194V-0
 Shell: Cold Roller Steel, Ni Plated
 Nut: Brass, Sn Over Ni Plated

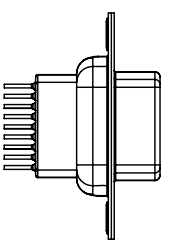


6222A-XXFYXXB01

6222A-XXFBXXB01

6222A-XXFPXXB01

6222A-XXFHXXB01



6222A-XXFNXXB01

Ordering Information

6222A-XX F X XX B 01

No. of Pins
 09, 15, 25, 37P
 Type
 Y=With Back Fork
 B=With Back Nut
 F=With Front Nut
 N=Without Fork
 Without Nut
 H=With Back Fork
 With Screw
 Contact Plating
 S0=Gold Flash/Tin
 S3=10u"Gold/Tin
 S4=5u"Gold/Tin
 S5=30u"Gold/Tin
 SN=Tin
 Insulator Color
 B:Black
 U:Blue

No. of Positions	DIM "A"	DIM "B"	DIM "C"	DIM "D"
09	16.33	24.99	30.81	19.28
15	24.66	33.32	39.14	27.65
25	38.38	47.04	53.04	41.30
37	54.84	63.50	69.32	57.44



OPERATION	DRAW	DATE	SCALE	FIT	PART NO.
XX	JYHuang	2012/12/04	mm		6222A-XXFYXXB01
XX	CHECK	DATE	SIZE	A4	TITLE: D-SUB FEMALE DUAL ROW 180° DIP
X.XXX	±0.25		SHEET	1/1	Customer NO.
X.XXX	±0.15		PROJ.		
Angle	± 3°	APPROVE			
DIM	TOL	DATE			
CHANGE					
MODIFICATION DESCRIPTION					
NEW					
2012/12/04					
REV	DATE				

WCON-Dongguan
 Tel: +86 769 85358920
 Fax: +86 769 85358915
 E-mail: sales@wcon.com

WCON-Kunshan
 Tel: +86 512 57468408
 Fax: +86 512 57468468
 E-mail: sales@wcon.com